

SEPTEMBER SLAM DEMO DERBY

Saturday, September 19, 2009 @ 6:30pm
at the Platte County Fairgrounds

Sponsored By:



Platte Motorsports LLC



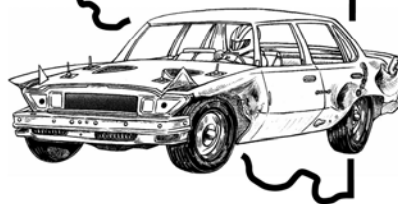
Full Slam Race

- 1st place = **\$1000.00**
- 2nd place = \$500.00
- 3rd place = \$300.00
- 4th place = \$200.00
- 5th place = Trophy

Compact Four Cylinder

- 1st place = **\$400.00**
- 2nd place = \$200.00
- 3rd place = \$100.00
- 4th place = \$50.00
- 5th place = Trophy

PLATTE
Motorsports



1980 & Newer Race

- 1st place = **\$500.00**
- 2nd place = \$300.00
- 3rd place = \$100.00
- 4th place = \$50.00
- 5th place = \$25.00

Pure Stock & Six Cylinder

- 1st place = **\$400.00**
- 2nd place = \$200.00
- 3rd place = \$100.00
- 4th place = \$50.00
- 5th place = Trophy

Entry Fees

Slam Class —Pre entry \$50 Received by 09/15/09 Day of Show \$80 + Pit Pass

80 & Newer * 4 Cyl Class * Other Classes - Entry \$25 + Pit Pass (\$20)

Minimum of 6 entries to run class. Payout based on 10 Entries and will at minimum match entries with Trophies.



Demolition Derby



Adults 16+ \$10

Ages; 6-15, & 65+ \$5

Pit Pass; \$20

www.PlatteMotorsports.com

No express or implied warranty of safety shall result from publication of or compliance with the rules and/or regulations. They are intended as a guide for the conduct of the sport and are in no way a guarantee against injury or death to participant, spectator, or official.

Pit & Drivers Registration, Regulations and Rules:

September Slam 2009

- 1) Slam Class -Pre-entry fee is \$50 includes driver pit pass (9/15/09 cut off). Day of Show \$80. This does not include any drivers pit passes. All other Classes (4 cylinder, 6 cylinder, Pure Stock and 1980 & Newer) \$25 entry fee, pit pass not included. Day of Show Pit passes are \$ 20 per person. Payout based on 10-car entry per class if not payout will be adjusted accordingly.
- 2) All drivers and pit crew must be **16 years of age or older** and must have valid driver's license. No one younger than 16 allowed in pit.
- 3) All drivers and pit crew between 16 and 18 years old must have notarized parent signature on the Minor Release Waiver.
- 4) Entries will be accepted up to two (2) hours prior to show time.
- 5) All drivers must attend pit meeting prior to show time.
- 6) **Driver's Safety** - Safety belts, helmets (DOT approved), Shirt and Long pants are required for Drivers during the event. Face shield or safety glasses of some type suggested. All drivers must remain in car until the end of the heat. No riders in demolition cars.
- 7) Any driver or pit person causing a disturbance must leave the grounds immediately. Belongings can be picked up the next day.
- 8) Proof of ownership or title to the car must be available upon request. VIN must also be on vehicle (RSMo 301.390.1 is the law)
- 9) Only demo cars and their tow vehicles will be allowed in the pit area. Additional cars or trucks will not be allowed.
- 10) No alcoholic beverages will be allowed in the pit area. Any violation of this rule will result in disqualification and immediate removal from the grounds.
- 11) Must have a wristband on and sign Waiver of Liability and Indemnity Agreement to be in the pit area.

Demolition Derby Car, Rules and Regulations:

- 1) **Full Size Slam Class** - American cars (other than Imperials and/or Imperial sub frames) allowed. No jeeps, trucks, carryalls, 4 wheel drive, or commercial vehicles allowed (i.e. checkers, vans, ambulances, limos, hearses, etc). Standard Police and taxi packages ok.
1980 & Newer Class - 1980 or newer, Full Size if car is over built you may be moved to slam class.
4 Cylinder Class - must run a 4cyl motor. Rear wheel drive with a wheelbase of 106" or less. Front wheel Drive wheel base of 108" or less. No Pacers, pickups or Vans in 4 Cylinder class. No Saturn's or other plastic cars with composite panels. All Slam rules below also apply.
Six cylinders Class- Open to small pickup & mini vans must run six cylinder motor.
Pure Stock Class - Bolt & Chain class, special rules apply contact Ron Pine for more info (816) 858-2314.
Powder Puff - We have had several requests for derby girl action. Minimum of 6 entries
*** Minimum of 6 entries to run class. If we have more than 20 entries in the 80's Class, and 4 cylinders we will or may run qualifying heats. ***
- 2) Full-size may use motor and tranny of choice, motor must be in stock location. You may chain or weld motor and tranny to keep in place.
- 3) Number must be painted on both sides of car and 12"x12" number sign on the top. Slogans and/or advertising must be in good taste.
- 4) All glass, plastic, pot metal and chrome must be removed BEFORE reaching the fairgrounds. Do not just knock out glass but remove cleanly. Trunks and interior must be empty of all debris, spare tires, rims, parts, etc.
- 5) Gas tanks must be removed from stock position and relocated in back seat area and properly secured. No extra gas cans permitted in car.
Boat tank or aftermarket fuel tank required. Do Not use OEM fuel tanks! If vehicle is equipped with an electric fuel pump a shut off switch (Red) must be placed in easy reach of driver. Batteries must be removed from stock position and relocated in passenger area. Cover battery and fuel tank for protection.
"NO Bungee Cords" Make sure they are secured tight and have no movement.
- 6) Radiators may be removed but not relocated. No added protection may be in front of radiator (including folded down hood). Water only please
- 7) All doors, hood, wagon gates, and trunk lids must be fastened shut. A maximum of 6 fasteners per hood, door, trunk and wagon gate, not closer than 12 inches apart, no extra bolts or chains in front of radiator. Maximum fastener size will be 1" diameter. All chains, wire, fasteners, etc. must pass through sheet metal only, with the exception of the front two bolts may go through the top side of frame and four in trunk may attach to frame.
Trunks and hatchbacks may weld 4" on 4" off but must have 12" inspect hole to trunk area.
- 8) Driver and Passengers outside Door seams may be welded with strap no larger 3" wide and 3/16" thick. Only driver's door may be reinforced.
- 9) **Welding** on body and frame. No reinforcements allowed other than specified below. Any metal added to reinforce the car is illegal! ABSOLUTELY NO WELDING ON FRAMES OR BODY UNLESS SPECIFIED With out adding extra metal or braces, weld only.
A-arms forward Top frame seams, Bumper shock boxes, motor and Transmission Mounts and Drivers & Passengers outside door seams.
- 10) Body and Frame. No chains, bolts or extra material may be attached, around or through frame. This includes any type of plating. Original body on stock frames for that year must be used. You may cut frames for minimal pre-bending, but may not weld the cut. You may replace OEM body mount hardware in the same configuration, but must not exceed 1" bolt diameter and 8" in length with 3" inch washer diameter. Space must be maintained between the body & frame (Minimum 1"). Body mount may not be covered in any way. No body bolt may extend below frame; all bolts and nuts must be inside of frame. Front radiator core support bolts may be changed. Package tray bolts are ok. Fender well cut outs may have 4 - 3/8 bolts per fender well. Also see Rule #11 below for rear cables. Sedagon's may not be bolted or welded down. **NO additional support may be added, in, through or attached to frame or body!**
- 11) Suspension must be workable and have bounce. Leaf springs must be stock. Coil over shocks, air shocks, blocked shocks or other reinforcement will not be allowed. OEM tow package OK. You can bolt or wire coil springs to rear end and frame to prevent springs from falling out. You can loop chain or wire from rear end to frame in 2 spots on each side. No bigger than #9 wire or three eights chain or cable may be used. Rear-end control arms may be reinforced, but must be workable. They may be shortened or made longer as well. Tie rods may also be reinforced. Steering gearbox may be changed.
- 12) **Slam Class only- 1980 and newer cars may be converted to leaf springs.** Springs must have at least a 2-inch stager, no more than 4 clamps per side, no more than 6 springs per side (car springs only). Springs must be no more than 2 1/2 inches wide, longest spring must be no longer than 5 foot. Thickness no more than 5/16. Mounting: Front spring must use factory suspension hole (trailing arm hole). Reinforcement of this hole must not exceed 3 inches of center of this hole and must be done on out side of frame only and using metal no thicker than the frame. Any reinforcement found on inside of frame will be cause for immediate disqualification. No reinforcement for leaf spring hanging. Washers no bigger than 4 inches, outside bracket no longer than 8 inches total. No welding except what it takes to mount the brackets. This conversion must be as close as possible to OEM style mounting. Ex: mid 70 style GM wagons and Chryslers. If officials find you went beyond how factory leaf springs and mounting you will not be allowed to participate and no refund of entry fee.
- 13) Bumpers- No special bumpers, extra weights, trailer hitches, OEM Passenger Bumpers are interchangeable. Any Automotive bumper may be used on any car (compacts must use compact). No homemade bumpers or brackets. You may weld the bumper seams, the shocks and weld the brackets to the frame. If you choose not to use brackets, you may weld bumper directly to frame. You may collapse compression bumper shocks and weld. You may trim bumper ends or fold them around. When welding bumpers, shocks and brackets, do not add any metal just use the welder. Bumpers may be flipped (upside down).
- 14) Pneumatic tires only (Air only). 30" maximum height. Tubes Optional. No cement, liquid fillers in tires. No solid tires or split rims. All wheel weights and any type of studs should be removed from tires. Valve stem protectors if mounted securely (rebar or flat stock) and Uni-lug center on OEM wheel ok
- 15) Auxiliary transmission cooler will be allowed, but must be located in the rear passenger's compartment and properly covered.
All transmission lines must be insulated on auxiliary coolers. Transmission lines may also be looped.
- 16) A single bar may be placed behind the driver's seat. The bar may be no higher than the stock seat and be parallel to the stock bench seat. A single bar may also be placed across the dash area. Bars maybe connected with sidebars (door bars) but must remain on the inside of passenger area. Door bars must attach to sheet metal only and have a maximum length of sixty inches. A single halo bar may be added and bolted to roof in 2 places. No kickers may be attached to the cage. Cage purpose is for driver's safety! Front and rear window bars (2 each) may be used but must attach to sheet metal only no further than 3" from window opening. Max size is 1" diameter or 1 1/2" angle for window bars.
- 17) Any car not participating in the action for 30 seconds, not moving for one (1) minute or stalled for one (1) minute will be disqualified.
No sandbagging, any car not actively participating will be given ONE warning before being disqualified.
- 18) No intentional head-on or driver-door shots allowed. No team driving (Holding a car while another hit's it)
- 19) You must have at least a 12" hole in hood for fire protection (4- 3/8" bolts may be used on cut outs). Two Fires and your out!
- 20) No person under the influence of alcohol or controlled substances will be permitted to participate or enter show area.
- 21) A protest will cost \$200.00 up front. If the protest stands, the \$200.00 will be returned. If not, the \$200.00 is forfeited.
- 22) All cars are subject to inspections, before (with Open hood), during and after the race. Inspections may be extensive if deemed necessary by the officials. (i.e. cutting frame, tires, etc.). A car will not be permitted to run or prize money held if the rules are violated.
- 23) The judge may require a driver to remove or change any part or portion of the automobile, which the judge considers to be unsafe to the driver or to other drivers in the event. The officials if deemed necessary will deal with any situation not covered in these rules. Any questionable or judgment calls may need to be brought up at drivers meeting for approval. All decisions of the judges are final.
- 24) All cars have to be removed from the grounds by Sunday 2am, or they will be towed for salvage.
- 25) **Patch and Repair**- On pre-ran cars only, 4 patches only on the entire frame, patches maximum cannot exceed 10 inches long by 4 inches wide, maximum thickness 1/4 inch. Absolutely No metal in frame, Frame damage must be obvious to inspectors. The patch rule above is for repairs only not for reinforcement. 1980's and newer may weld 12" per frame rail behind a-arm. Only reasonable repairs will be considered on case-by-case bases.

For Information or Questions Contact:

Ron Pine, P.O. Box 237, Platte City, MO. 64079, (816) 858-2314

Troy Jones (816) 891-6731 or PCdemoderby@kc.rr.com